

“Some people don’t like change. Change doesn’t much care.”

“I guess being the very first station to use Ethernet for audio routing has made WEGL a little famous! Someone’s always on the phone:



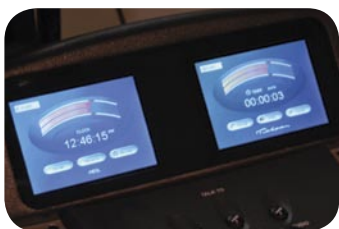
‘Tell me about your Axia system. What’s the real story?’

“The real story is that two years ago, when our our old analog consoles began to fall apart, we put in an Axia IP-Audio network and SmartSurface. And I’ve never had a single reason to regret that decision.



“Sure, I was skeptical at first. But audio-over-Ethernet technology is compelling!

Other companies just use CAT-5 to carry audio using proprietary protocols. Axia uses standard Ethernet to build a true network with uncompressed digital streams



plus machine logic and program-associated data. No one else does that! I was a little concerned about dropouts and QoS

problems, so we went to the Axia factory and assembled a network ourselves. It was easy to do, and it just *worked*. We were sold.

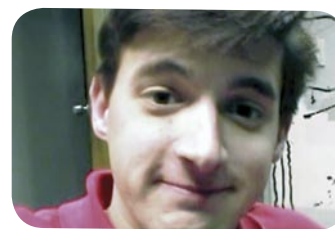
“The jocks took to the new board like fish to water. Show Profiles are their favorite part, since they can all have custom board setups. Some like their headphone levels blasting, some don’t. Some like the mic on the left side, others on the right. I’ve got one guy who brings in his vinyl records every week for an oldies show; he’s the only one who uses the turntables but when he loads his profile, they’re ready to go.



“There were a few little bugs, but we had the very first surface! Axia support gave us new software right away and our problems were solved. Two years later, I’m more impressed than ever. I recommend Axia one-hundred percent.



“Since the first studio was installed, we’ve added a new production and interview studio, and we plan on building three more studios. It’ll be all Axia — all the way to the transmitter.”



— Marc Johnson, Chief Engineer, WEGL-FM
Auburn University, Auburn, Alabama



www.AxiaAudio.com